

Entry Level IT Systems Engineer

Job Ref 115

Job Description

First Light Fusion is seeking an entry-level IT Systems Engineer with knowledge of Linux and Windows architectures. The person taking this role will be exposed to a broad range of IT-related aspects to help the company achieve its exciting and ambitious goals. The applicant will be responsible for supporting our end users and for the maintenance and support of the company's Linux and Windows systems.

A proactive approach is required to continually improve the company's IT systems with the constant objective of providing an environment that allows the scientific team to research at the fastest pace. Additional tasks will be to investigate specialist technologies when required and be willing to take on additional tasks as needed.


Responsibilities will include:

- Supporting end-user issues via our ticketing system
- Troubleshooting and implementing fixes to issues reported
- Researching, testing and implementing new software
- Provisioning and setup of new users
- Working with the security team to resolve detected issues
- Working with existing providers to RMA and resolve hardware problems

Essential:

- Degree or equivalent level computer science qualification
- Administration of Linux and Windows systems
- Experience in troubleshooting and solving user issues
- Hands-on with willingness to learn with a passion for technology
- Passion for fusion and for taking a bold approach to a high-risk transformational technology
- Demonstrated self-motivation, enthusiasm to work in a dynamic team environment and evidence of taking the initiative.
- Strong communication and interpersonal skills

Desirable:

- Administration of Office 365
 - Experience with automation/configuration tools, e.g. Ansible
 - Knowledge of Virtualization
 - Networking Knowledge
 - Education and training of end users
- 

Benefits

- Very competitive salary
- 25 days annual leave (increasing to 28 with time in service) + bank holidays
- 8% employer pension contribution without matching requirements
- Relocation support
- Flexible working
- Generous share options scheme
- Free lunch and soft drinks
- Enhanced maternal / paternal leave
- Enhanced sick leave

Additional information

[How to apply](#)

Please send your application and CV to careers@firstlightfusion.com quoting the job title in the subject. If you don't hear back from us within four weeks, it means that unfortunately your application was unsuccessful at this time.

Informal enquiries may also be addressed to careers@firstlightfusion.com.

[The interview process](#)

We typically carry out two separate interviews, each one about sixty to ninety minutes long. The first one aims to understand how your skills match what is required for the job and the discussion will be focused on your areas of expertise. If successful, you will be invited to the second interview, which is more focused on your personal skills, and how your objectives align with the company mission and values. We try to understand the value you will add to First Light, and how you can thrive and be happy with us. There will be opportunity to ask us as many questions as you like.

If you are invited to the second interview, it's probably time to warm up two of your referees, as we may ask you to put us in touch with them. If you are the successful candidate, we will send you an offer letter and, once agreed, a contract.

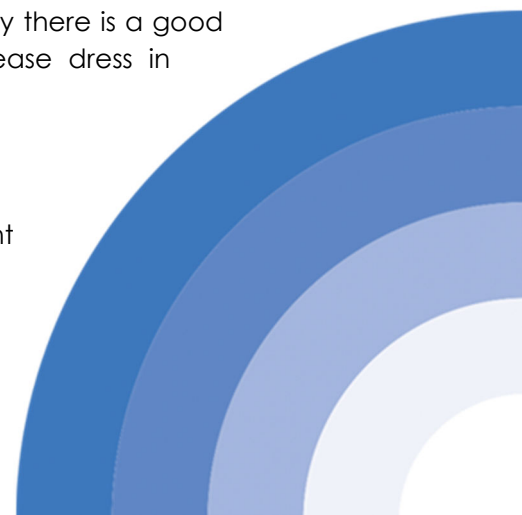
If you are invited to an interview, we will certainly get back to you to let you know the outcome.

To help with logistics issues, we can arrange so that the two interviews are organised on the same day. We will also reimburse reasonable expenses you incur to come to talk to us.

We don't have a dress code at First Light and regardless of seniority there is a good mix of t-shirts, trainers, shirts and blazers. For your interview, please dress in whatever makes you feel most confident and comfortable.

[Our commitment to equality, diversity and inclusion](#)

We are a small company with a huge mission. The only important aspect for the team, and for each individual, is the contribution they



can make. Our selection process and requirements for career progression disregard gender, gender identity, race, disability, colour, religion, and all other aspects of diversity that make us all humans. Diverse teams have been proven to be better and we strongly believe it. We're not perfect but we strive to be.

[Information for recruiters](#)

We work with a trusted network of recruiters, therefore CVs sent by other recruitment agencies will not be considered. In the event that the company receives a CV from both the direct applicant and a recruitment agency, the CV will be treated as a direct application by the individual only. Unsolicited contact from recruitment agencies will be disregarded.

First Light Fusion

We are a lean, focused and agile company researching energy generation by inertial confinement fusion. We spun out from the University of Oxford in June 2011 and are based near Oxford. First Light continues to work closely with the academic community, both in the UK and internationally. The company is well-funded by both institutional investors and private individuals.

Inertial confinement fusion for energy generation is a well-established research field and is being pursued in many laboratories worldwide, perhaps most notably in the US at the National Ignition Facility. We are exploring a number of alternative research directions that harness the same fundamental physics, with the prime focus being power generation. Our work to-date has included theoretical analysis, detailed numerical simulation, and experimental validation. We have an increasingly clear vision of the pathway to a power plant.

We really believe fusion will be solved in the 2020s. If it's solved by us, fantastic, if it's solved by someone else, still great.

